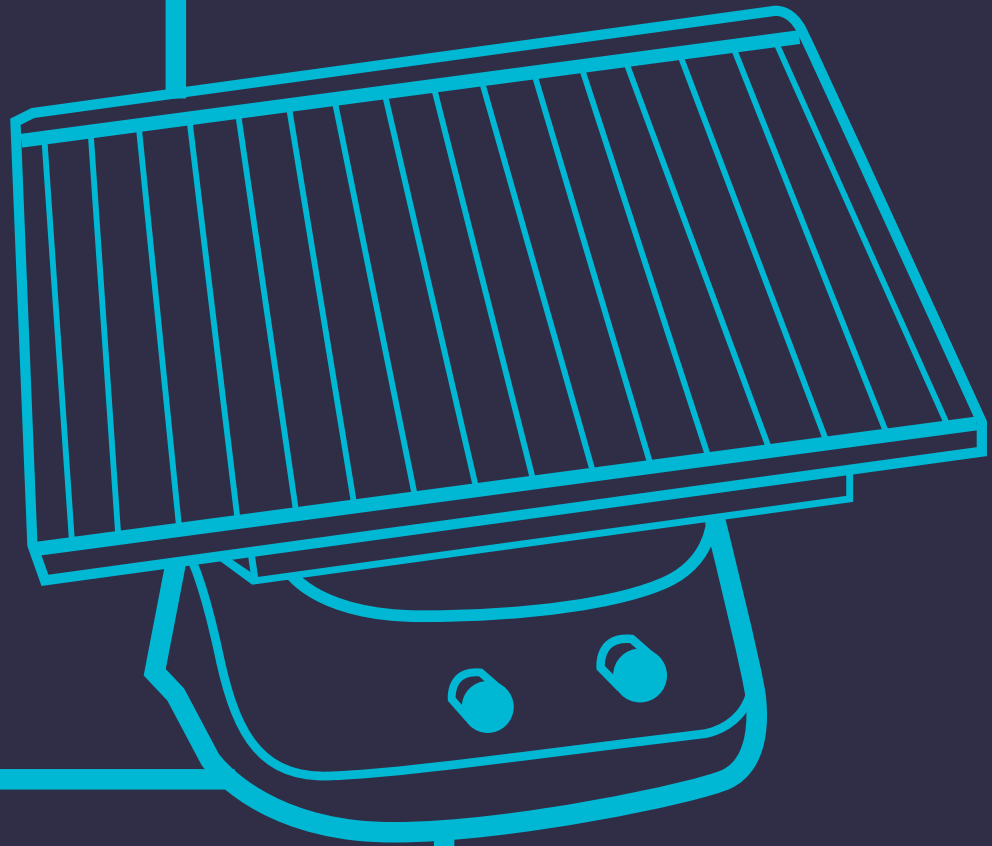


EQUIPMENTS



Magnetic Stirrer &
Hot Plates
Digital Dry Bath
Microplate Mixer
Orbital Shaker
Digital Incubator &
More

SWIRLTOP – Ultra Flat & Eco Magnetic Stirrer

Code	Product	Workplate Size (cm)	No. per Case	Price /Case (₹)
E11307	Ultra Flat Magnetic Stirrer	9 x 9	1	11500
E11308	Eco Magnetic Stirrer	12x12	1	9000

SWIRLTOP magnetic stirrers are used in biotech labs, provides better mixing and is ideal for application of physical and chemical analysis.

It comes with automatic reverse rotation for better mixing result.

Its body is made of ABS material.

Top plate is made from chemically resistant materials (PET).

Slip proof and stable.

Specifications

Code	E11307	E11308
Voltage	220-240 V	220-240 V
Frequency	50-60 Hz	50-60 Hz
Stirring position	1	1
Speed range	15-1500 rpm	300-2000 rpm
Max. stirring quantity(H ₂ O)	0.8 L	1.5 L
Maximum magnetic bar(length)	40mm	40mm
Dimensions of work plate	90x90 mm	120x120 mm
Dimensions	175x120x15 mm	150x145x50 mm
Weight	0.3 kg	0.3 kg
Speed setting	Button	Scale
Permissible ambient Temperature & Humidity	5-40° C	5-40° C
Permissible relative humidity	80%	80%
Protection Class	IP65	IP21



E11307



E11308

SWIRLTOP – Digital (LED) Magnetic Stirrer & Hot Plate

Code	Product	Workplate Size (Ø cm)	No. per Case	Price / Case (₹)
E11231	LED Digital Magnetic Stirrer & Hot Plate with Support Rod & External Temperature Probe	13.5	1	23000
E11234	LED Digital Magnetic Stirrer & Hot Plate	13.5	1	20500

Spare Accessories

Code	Product	No. per Case	Price / Case (₹)
E11232	SS / Support Rod	1	3600
E11233	ETP / External Temperature Probe	1	7500

Swirl Top unit feature an extremely durable, chemical resistant white stainless steel ceramic coated surface that allows immediate heat transfer.

External Temperature sensor accessory is available with accuracy of $\pm 0.5^{\circ}\text{C}$.

Extremely accurate digital control system is ideal for applications of analytical and biological laboratory.

Swirl Top has advanced microprocessor control with convenient turn knobs that allow quick, precise adjustment and

maintains accurate temperature and speed.

Large, backlit LED display provide constant visualization of speed and temperature while safety LED indicates when the top plate is above 50°C .

LED Display shows temperature and speed.

This digital system is compatible with a wide variety of popular glass beakers, flasks, bottles and vessels.

Heat resistant ABS casing.

Specifications

Voltage	220-240V
Frequency	50-60 Hz
Motor type	Brushless DC Motor
Maximum stirring capacity	3 L
Work plate dimensions diameter	Diameter 5 Inch
Work plate material	SS Cover Ceramic
Shaking movement	Orbital
Temperature range	Room Temperature - 280°C
Speed range	200 - 1500 rpm
Dimension	150 x 260 x 80 mm
Weight	1.8 kg
Permissible ambient temperature	5 - 40°C
Permissible relative humidity	80%
Protection Class	IP21



SWIRLTOP - Analog Magnetic Stirrer & Hot Plate

Code	Product	Workplate Size (cm)	No. per Case	Price /Case (₹)
E11656	Analog Magnetic Stirrer	13.5 x 13.5	1	28000
E11655	Analog Magnetic Stirrer & Hot Plate	13.5 x 13.5	1	40000

Swirl Top unit feature an extremely durable, chemical resistant white ceramic work surface.

Swirl Top has advanced microprocessor control with convenient turn knobs that allow quick, precise adjustment and maintains accurate temperature and speed.

Max heating plate temperature 340°C Maximum Speed at 1500rpm.

Outstanding brushless DC motor performance enables more stirring power.

Specifications

Code	E11656	E11655
Voltage	220-240V	220-240V
Frequency	50-60 Hz	50-60 Hz
Motor Type	Brushless DC Motor	Brushless DC Motor
Maximum stirring capacity	10 L	20L
Work plate material	Glass with Ceramic	Stainless steel with ceramic
Temperature range	----	Room Temperature - 340°C, Increment 1° C
Speed display	Analog	Analog
Temperature display	----	Analog
Speed range	0 - 1500 rpm, resolution 3 1 rpm	0 - 1500 rpm, resolution 3 1rpm
Maximum magnetic bar (length)	80 mm	80mm
Dimension	215 x 360 x 112 mm	160x280x85 mm
Weight	3.8 kg	2.8 kg
Permissible ambient temperature and Humidity	5 - 40°C	5 - 40°C
Permissible relative humidity	80%	80%
Protection class	IP21	IP42



SWIRLTOP - Analog Magnetic Stirrer & Hot Plate

Code	Product	Top Plate Size (cm)	No. per Case	Price /Case (₹)
E11211	Magnetic Stirrer	19 x 19	1	19900
E11213	Hot Plate	19 x 19	1	19900
E11215	Magnetic Stirrer & Hot Plate with Support Rods	19 x 19	1	28500

Swirl Top unit feature an extremely durable, chemical resistant white ceramic work surface.

Swirl Top has advanced microprocessor control with convenient turn knobs that allow quick, precise adjustment and maintains accurate temperature and speed.

Swirl Top is compatible with a wide variety of popular glass beakers, flasks, bottles and vessels.

E11215 comes complete with support rod for mounting thermometers and temperature probes.

Specifications

Voltage	220-240 V
Frequency	50 Hz
Shaking movement	Orbital
Maximum stirring capacity	5 L
Temperature range	5-380° C
Speed range	60-1500 rpm
Dimension	200x230x115 mm
Weight	4 kg
Permissible ambient temperature	5-40° C
Permissible ambient humidity	80%



SWIRLTOP - Digital (LCD) Magnetic Stirrer & Hot Plate

Code	Product	Workplate Size (cm)	No. per Case	Price /Case (₹)
E11225	Digital Magnetic Stirrer	16.5 x 16.5	1	28000
E11226	Digital Hot Plate	16.5 x 16.5	1	28000
E11227	Digital Magnetic Stirrer & Hot Plate	16.5 x 16.5	1	32000

Spare Accessories

Code	Product	No. per Case	Price /Case (₹)
E11228	Support Rod	1	5299
E11229	External Temperature Probe	1	11000

Swirl Top unit feature an extremely durable, chemical resistant white ceramic work surface.

It has advanced microprocessor control with convenient turn knobs that allow quick, precise adjustment and maintains accurate temperature and speed.

Large, backlit LCD display provide constant visualization of speed and temperature while safety LCD indicates when the top plate is above 50° C

This digital system is compatible with a wide variety of popular glass beakers, flasks, bottles and vessels.

Optional probe is available to derive precise temperature control. When connected the probe provides direct feedback to the microprocessor that continuously adjusts and maintains the selected temperature in the sample within accuracy of $\pm 0.5^{\circ}\text{C}$

Specifications

Voltage	220 - 240 V
Frequency	50 Hz
Shaking Movement	Orbital
Maximum stirring capacity	5 L
Temperature Range	5 - 380° C
Speed Range	200 - 1500 rpm
Dimension	177 x 267 x 102 mm
Weight	2.2 kg
Permissible ambient temperature	5 - 40° C
Permissible relative humidity	80%



SWIRLTOP – 7Inch Digital Magnetic Stirrer & Hot Plate

Code	Product	Workplate Size (cm)	No. per Case	Price / Case (₹)
E11650	Magnetic Stirrer & Hotplate with support Rod & External Temperature Probe	18.4 x 18.4	1	55000
E11652	Magnetic Stirrer & Hotplate	18.4 x 18.4	1	52000
E11651	Hotplate with support Rod & External Temperature Probe	18.4 x 18.4	1	40000
E11653	Hotplate	18.4 x 18.4	1	36500

Spare Accessories

Code	Product	No. per Case	Price / Case (₹)
E11232	SP - Support Rod	1	3600
E11233	ETP - External Temperature Probe	1	7500

Built in PID Controller ensures the safe heating of the medium with overheating and protection.

Max heating plate temperature 550°C

Glass ceramic work place provides excellent chemical resistant performance and most efficient heat transfer.

External temperature control is possible by connecting the temperature sensor (PT 1000) with an accuracy at $\pm 0.2^{\circ}\text{C}$.

Digital speed controlling.

Maximum Speed at 1500rpm.

Outstanding brushless DC motor performance enables more stirring power.

Two rotating knobs enable the easy and direct change of speed and temperature

HOT WARNING will flash when the work plate temperature is above 50°C or even the hot plate is turned off.

Remote Function provides PC Control and data transmission.

Specifications

Code	E11650	E11651
Voltage	220-240V	220-240V
Frequency	50-60 Hz	50-60 Hz
Motor Type	Brushless DC Motor	Brushless DC Motor
Maximum stirring capacity	20 L	NA
Work plate dimensions diameter	184x184mm(7Inch)	184x184mm (7Inch)
Work plate material	Glass Ceramic	Glass Ceramic
Temperature range	Room Temperature - 550°C , Increment 1°C	Room Temperature - 550°C , Increment 1°C
Overheating protection	580°C	580°C
Temperature control accuracy	$\pm 0.1^{\circ}\text{C}$	$\pm 0.1^{\circ}\text{C}$
Speed display	LCD	NA
Temperature display	LCD	LED
Speed range	100 - 1500 rpm, resolution ± 1 rpm	100 - 1500 rpm, resolution ± 1 rpm
Maximum magnetic bar (length)	80mm	NA
Dimension	215x360x112mm	215x360x112mm
Protection class	IP21	IP21



SWIRLTOP –Multi Channel Magnetic Stirrer & Hot Plate

Code	Product	Workplate Size (cm)	No. per Case	Price /Case (₹)
E11235	10 Channel Magnetic Stirrer	18 x 45	1	90000
E11236	10 Channel Magnetic Stirrer & Hot Plate	18 x 45	1	130000
E11237	16 Channel Magnetic Stirrer	36.5 x 34.5	1	100000

SWIRLTOP Unit feature an extremely durable stainless steel plate with anti-slip and anti-corrosion silicon surface.

Swirl Top advanced Microprocessor based electronic speed control motor provides constant speed.

High performance multi-position magnetic stirrer with uniform temperature distribution.

Micro-processor based stirring controls to provide consistency with various samples.

Brushless DC Motor for maintenance free & quite operations.

Specifications

Product	16 Channel	10 Channel
Voltage	220-240V	220-240V
Frequency	50-60Hz	50-60Hz
Dimension of work plate	365 x 345 mm	180 x 450 mm
Speed Display	Scale	Scale
Shaking movement	Orbital	Orbital
Temperature range	NA	Room Temperature-120°C
Motor type	DC Motor	DC Motor
Stirring speed	0-1100 rpm	0-1100 rpm
Stirring position	16	10
Max. Stirring capacity	0.4L(each stirring position)	0.4L(each stirring position)
Max. magnetic bar	40mm	40mm
Plate material	Stainless Steel with Silicone Film	Stainless Steel with Silicone Film
Dimensions (WXDXH)	500 x 380 x 65 mm	182 x 622 x 65 mm
Protection class	IP21	IP21



E11235



E11237

SWIRLMAX- Tube Roller

Code	Product	No. per Case	Price /Case (₹)
E11230	Tube Roller	1	21499

Swirlmax is a classic tube roller that can be used for rocking and rolling for complete mixing.

It has a wide speed range of 0-70rpm.

It has a total of six roller with small footprints and it is very easy to clean.

Swirlmax has a quite DC brushless motor which is reliable, sound free and maintenance free.

Swirlmax can be used in cold rooms or in incubators.



Specifications	
Voltage	220-240 V
Frequency	50 Hz
Power	25 W
Motor Type	DC Motor
Rocking Motion	Rocking and Rolling
Amplitude	24 mm
Max. load capacity	4 kg
Number of Rollers	6
Roller Size	280 mm
Speed Range	0-70 rpm
Speed Display	Scale
Operation Type	Continuous operation
Dimensions	450 x 260 x 120 mm
Weight	4.5 kg
Permissible ambient Temperature	5 - 40° C
Permissible ambient Humidity	80%
Protection Class	IP 21

HOTBLOCK - LED Digital Dry Bath

194

Code	Product	Block Size (cm)	No. per Case	Price / Case (₹)
E11330	LED Digital Dry Bath with heating block for 1.5 / 2.0 ml	15 x 9.5	1	38000

Spare Accessories

Code	Product	Places	No. per Case	Price / Case (₹)
E11331	Heating Block for 0.2 ml	54	1	12300
E11332	Heating Block for 0.5 ml	40	1	12300
E11333	Heating Block for 1.5/2.0 ml	40	1	12300
E11334	Heating Block for 5/15 ml	28	1	12300
E11335	Heating Block for 50 ml	8	1	12300
E11336	Heating Block for 0.2, 0.5, 1.5/2.0 ml	18	1	12300
E11337	Heating Block, used for 96/384 micro plate	-	1	12300

ABDOS LED Digital Dry Bath is ideal for molecular biology, histology, clinical, environmental and industrial laboratories including melting and boiling point determination, enzyme reactions, incubation and activation of cultures, immunoassays, DNA denaturation, culture and media tests, coagulation, tests, blood urea nitrogen determinations and in-situ hybridizations.

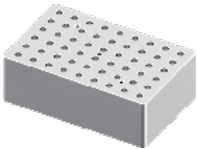
In-Built over temperature protection.

Various optional blocks are available for best performance

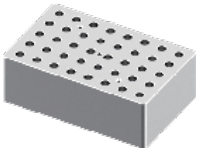
Protection class according to DIN EN 60529



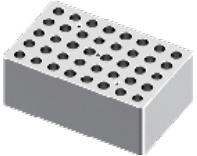
Specifications	
Voltage	220-240 V
Frequency	50-60 HZ
Adaptor block material	Aluminium
Maximum heating rate	5.5°C/min
Power	160 W
Heating temperature Range	Room Temperature-120°C
Control accuracy	±0.5°C
Safety temperature	140°C
Timer	Yes
Time setting range	0 min-99h 59 min
Operation type	Continuous/timed operation
Dimensions	175 X 290 X 85 mm
Weight	1.6 kg (Without heating Block)
Permissible ambient temperature	5-40° C
Permissible ambient Humidity	80%
Protection Class	IP21



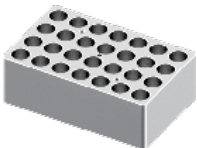
E11331



E11332



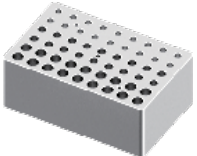
E11333



E11334



E11335



E11336

THERMO MIX - LCD Digital

195

Code	Product	No. per case	Price / Case (₹)
E11340	LCD Digital Thermo Mix with Heating, Cooling and Mixing with 1.5 ml Heating Block	1	POR
E11341	LCD Digital Thermo Mix with Heating and Cooling with 1.5 ml Heating Block	1	POR
E11342	LCD Digital Thermo Mix with Heating and Mixing with 1.5 ml Heating Block	1	POR

Spare Accessories

Code	Product	Places	No. per case	Price/ Case (₹)
E11343	Heating Block, used for 0.2 ml / 96 well PCR plate	96	1	POR
E11344	Heating Block, used for 96 /384 well micro plate	96/384	1	POR
E11345	Heating Block, used for 0.5 ml	24	1	POR
E11346	Heating Block, used for 1.5 ml	24	1	POR
E11347	Heating Block, used for 2.0 ml	24	1	POR
E11348	Heating Block, used for 5 ml	8	1	POR
E11349	Heating Block, used for 15 ml	8	1	POR
E11350	Heating Block, used for 50 ml	4	1	POR

ABDOS Thermo Mix Series allow for precise and efficient shaking and mixing as well as excellent temperature accuracy. Uniform mixing offers a wide range of applications, such as Gene Synthesis, Gene Purification, Gene Denaturation, Protein Denaturation, Enzymatic reaction Bacterial growth and many more.



Specifications			
Code	E11340	E11341	E11342
Voltage	220 - 240 V	220 - 240 V	220 - 240 V
Frequency	50 - 60 Hz	50 - 60 Hz	50 - 60 Hz
Functions	Heating, cooling & Mixing	Heating & Cooling	Heating & Mixing
Adaptor Block Material	Aluminium	Aluminium	Aluminium
Temperature Range	Heating :25°C-100°C Cooling :25°C - below15°C	Heating :25°C-110°C Cooling : 25°C - below25°C	Heating :25°C-100°C
Temperature Uniformity	Max ±0.5°C	Max ±0.5°C	Max 30.5°C
Temperature Accuracy	±0.5°C	±0.5°C	±0.5°C
Maximum Heating Rate	5.5°C/min	5.5°C/min	5.5°C/min
Maximum Cooling Rate	5.5°C/min(100°C-25°C) 0.5°C/min(below 25°C)	2.5°C/Min(100°C-25°C) 0.5°C/Min(below 25°C)	
Mixing Frequency	200-1500 rpm	NA	200-1500 rpm
Mixing Orbit	3 mm	NA	3 mm
Program	6	9	6
Overheating Protection	150°C	150°C	150°C
Dimension(WXDXH)	200x235x120mm	200x235x120mm	200x235x120mm
Weight	7.3 kg	7.3 kg	7.3 kg



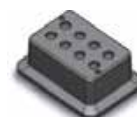
E11345



E11346



E11347



E11348



E11349



E11350



E11344



E11343

SWIRLEX – LCD Digital Overhead Stirrer

196

Code	Product	Maximum Stirring Quantity (Lts)	No. per Case	Price / Case (₹)
E11310	Digital Overhead Stirrer with Universal Plate Stand including support holder and fixing device & (E11313) Stainless Steel Crossed Stirrer	20	1	69300
E11311	Digital Overhead Stirrer with Universal Plate Stand including support holder and fixing device & (E11313) Stainless Steel Crossed Stirrer	40	1	82500

Spare Accessories

Code	Product	Dimensions (cm)	No. per Case	Price /Case (₹)
E11312	Universal Plate Stand including support holder and fixing device	20 x 31 (L x W)	1	10000
E11313	Stainless Steel Crossed Stirrer	40 x 5 (L x Ø)	1	1199
E11314	Stainless Steel Straight Stirrer	40 x 6 (L x Ø)	1	2999
E11315	Stainless Steel Blade Stirrer	40 x 6.8 (L x Ø)	1	2999
E11316	Stainless Steel Centrifugal Stirrer	40 x 9 (L x Ø)	1	2999
E11317	PTFE Crossed Stirrer	35 x 6.5 (L x Ø)	1	4599
E11318	PTFE Straight Stirrer	35 x 7 (L x Ø)	1	4599
E11319	PTFE Blade Stirrer	35 x 6.8 (L x Ø)	1	4599
E11320	PTFE Centrifugal Stirrer	35 x 8.5 (L x Ø)	1	4599

Swirlex overhead stirrer is widely used in chemical synthesis, pharmaceutical synthesis, physical and chemical analysis, petrochemical industry and more.

Reliability, long continuous service and outstanding performance are its hallmark.

Digital LCD display for precise monitoring of set and actual speed.

LCD Torque displays real time information on viscosity changes.

Protection and safety circuits ensures automatic cut-off in an anti-stall or overload conditions.

Provides a constant speed even with changes in viscosities of sample.

RS232 interface PC can control and document all operation values via RS232 interface.



Specifications		
Voltage	E11310	E11311
Frequency	220-240V	220-240V
Power	50-60 HZ	50-60 HZ
Speed Range	70 W	130 W
Speed Display	50 - 2200 rpm	50 - 2200 rpm
Accuracy	33 rpm	33 rpm
Max. Stirring Quantity	20 L	40 L
Max Torque	40 Ncm	60 Ncm
Max Viscosity	10000 mPas	50000 mPas
Chuck range diameter	0.5 - 10 mm	0.5 - 10 mm
Overload Protection Display	LED Lights, Motor Automatically Stops	LED Lights, Motor Automatically Stops
Motor Protection Display	LED Lights, Motor Automatically Stops	LED Lights, Motor Automatically Stops
Dimensions	83 x 220 x 186 mm	83 x 220 x 186 mm
Weight	2.6 kg	2.8 kg
Permissible ambient Temperature	5-40° C	5-40° C
Permissible ambient Humidity	80%	80%
Protection class according To DIN/EN 60529	IP 21	IP 21



SWIRLEX - Vortex Shaker

197

Code	Product	Work Plate Size	No. per case	Price /Case (₹)
E11190	Swirlex - Adjuststable Vortex Shaker	4mm	1	10500

Spare Accessories

Code	Product	No. per case	Price /Case (₹)
E11191	Tube holding rod	1	3555
E11192	Universal 100 mm top plate with 4 vaccum suction feet	1	1184
E11198	Platform pad for tubes and vessels Ø 99 mm	1	1339
E11197	Tube adaptear for 48 holes test tubes Ø 6 mm	1	1339
E11193	Tube adaptear for 18 holes test tubes Ø 10 mm	1	1339
E11194	Tube adaptear for 12 holes test tubes Ø 12 mm	1	1339
E11195	Tube adaptear for 8 holes test tubes Ø 16 mm	1	1339
E11196	Tube adaptear for 8 holes test tubes Ø 20 mm	1	1339

*E11192 is required to run Abdos E1198, E11197, E11193, E11194, E11195 & E11196 adapters.

Swirlex-Vortex is suitable for touch or continuous or fixed operation.

Used for gentle mixing to vigorous re-suspension of cells biological and canonical liquid components in tubes using eccentric mechanism.

A wide range of accessories is also available.

Swirlex vortex Shaker is eccentric with oil less ball bearing.

These vortex shakers contain specially designed silicone feet and steel base excellent for damping vibration.

Specifications

Code	E11190
Voltage	220-240V
Frequency	50-60Hz
Speed Range	0 - 2500 rpm
Shaking Movement	Orbital
Outer Diameter	4mm
Speed Display	Analog Type
Run Type	Continuous/Touch operation
Dimensions	127x130x160 mm
Weight	3.5 kg
Power	60W
Permissible ambient Temperature	5-40° C
Permissible relative humidity	80%
Protection Class	IP21



SWIRLEX- MICROPLATE MIXER

198

Code	Product	No. per Case	Price / Case (₹)
E11200	Swirlex Microplate Mixer Including Microplate Clamp(E11201) as standard	1	30000

Spare Accessories

Code	Product	No. per Case	Price / Case (₹)
E11201	Microplate clamp	1	700
E11202	Double microplate clamps	1	800

SWIRLEX-Microplate Mixer is used for holding single or double micro plates with an SBS footprint.

This is widely used in life sciences including microbiology, cell and molecular biology,

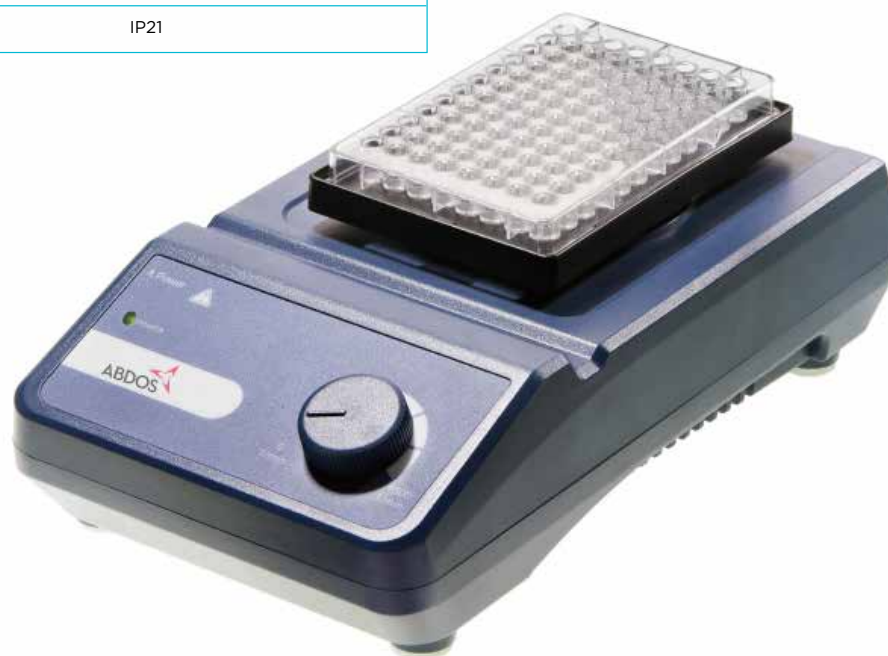
immunology and biotechnology for various mixing applications with optional adapters. The high speed and small diameter combine to offer a true vortexing action in each well of the micro plate. This action ensures both complete and uniform mixing.

Specifications

Speed Range:	Single Microplate :0-1500 rpm Double Microplate :0-1000 rpm
Voltage	220-240V
Frequency	50-60Hz
Shaking Movement:	Orbital
Orbit Diameter:	4.5 mm
Maximum Shaking Weight (With accessory)	0.5 Kg
Motor Type :	Brushless DC Motor
Dimensions:	260x150x80mm
Permissible ambient temperature	5-40° C
Permissible relative humidity	80%
Protection Class	IP21



E11202



WAVEX- CLASSIC TUBE ROTATOR

199

Code	Product	No. per Case	Price / Case (₹)
E11300	Wavex- Classic Tube Rotator	1	36200

Spare Accessories

Code	Product	No. per Case	Price / Case (₹)
E11301	Plastic Clips for 1.5 ml x 12 micro centrifuge tubes, Disk accessory	1	499
E11302	Plastic Clips for 15 ml x 12 micro centrifuge tubes, Disk accessory	1	649
E11303	Plastic Clips for 50 ml x 12 micro centrifuge tubes, Disk accessory	1	849

Wavex rotating mixer give gentle but effective mixing of biological samples to be held in 1.5ml to 50 ml tubes used in a variety of applications including immune precipitations, prevention of blood coagulation and latex diagnostics.

Wavex rotating mixer has a Disk type design.

Wavex rotating mixer give gentle but effective mixing of biological samples to be held in 1.5ml to 50 ml tubes used in a variety of applications including immune precipitations, prevention of blood coagulation and latex diagnostics.

Specifications

Voltage	220-240 V
Frequency	50 Hz
Power	20 W
Motor Type	DC Motor
Speed Range	0 - 80 rpm
Operation Type	Continuous
Dimensions	300 X 220 X 310 mm
Permissible ambient Temperature	5-40° C
Permissible ambient Humidity	80%
Protection Class	IP 21



WAVEX – LCD TUBE ROTATOR

200

Code	Product	No. per Case	Price / Case (₹)
E11270	Wavex- LCD Tube Rotator with Disk accessory for 50 ml x 8 centrifuge tubes	1	70000

Spare Accessories

Code	Product	No. per Case	Price / Case (₹)
E11271	Disk accessory for 1.5 ml x 60 micro centrifuge tubes	1	10000
E11272	Disk accessory for 50 ml x 8 centrifuge tubes	1	5000
E11273	Disk accessory for 15 ml x 16 tubes	1	5500
E11274	Disk support rods used with disk accessories	4	2500

Wavex rotating mixer give gentle but effective mixing of biological samples to be held in 1.5ml to 50 ml tubes used in a variety of applications including immune precipitations, prevention of blood coagulation and latex diagnostics.

Wavex rotating mixer has a Disk type design.

Wavex rotating mixer give gentle but effective mixing of biological samples to be held in 1.5ml to 50 ml tubes used in a variety of applications including immune precipitations, prevention of blood coagulation and latex diagnostics.

Specifications

Voltage	220-240 V
Frequency	50 Hz
Power	40 W
Motor Type	DC Motor
Tilt Angle	0 - 90°
Speed Range	10 - 70 rpm
Speed & Timer Display	LCD
Time Setting Range	1 - 1199 min
Operation Type	Continuous / timed operation
Dimensions	280 x 210 x 300 mm
Weight	8 kg
Permissible ambient Temperature	5-40° C
Permissible ambient Humidity	80%
Protection Class	IP 21



E11271



E11272



E11273



E11274

WAVEX – Classic Rotating Mixer

201

Code	Product	No. per Case	Price / Case (₹)
E11305	WAVEX- Classic Rotating Mixer	1	34500

Spare Accessories

Code	Product	No. per Case	Price / Case (₹)
E11301	Plastic Clips for 1.5 ml x 12 micro centrifuge tubes.	1	499
E11302	Plastic Clips for 15 ml x 12 micro centrifuge tubes.	1	649
E11303	Plastic Clips for 50 ml x 12 micro centrifuge tubes .	1	849

Wavex tube rotators give gentle but effective mixing of biological samples to be held in 1.5 ml to 50 ml tubes used in a variety of applications including immune precipitations, prevention of blood coagulation and latex diagnostics.

Specifications

Voltage	220-240 V
Frequency	50-60 Hz
Power	20 W
Motor Type	DC Motor
Tilt Angle	0 - 90°
Speed Range	0-80 rpm
Speed & Timer Display	Scale
Time Setting Range	1 - 1199
Operation Type	Continuous
Dimensions	150 x 530 x 190 mm
Weight	8 kg
Permissible ambient Temperature	5-40° C
Permissible ambient Humidity	80%
Protection Class	IP21



WAVEX – LCD ROTATING MIXER

202

Code	Product	No. per Case	Price /Case (₹)
E11280	Wavex- LCD Rotating Mixer with Rotisserie accessory for 50 ml x 24 centrifuge tubes horizontally	1	60000

Spare Accessories

Code	Product	No. per Case	Price /Case (₹)
E11281	Rotisserie accessory for 1.5 ml x 48 micro centrifuge tubes horizontally	1	10000
E11282	Rotisserie accessory for 50 ml x 24 centrifuge tubes horizontally	1	9000
E11283	Rotisserie accessory for 15 ml x 24 centrifuge tubes horizontally	1	9000
E11284	Rotisserie accessory for 1.5 ml x 32 micro centrifuge tubes vertically	1	9000
E11285	Rotisserie accessory for 50 ml x 16 centrifuge tubes vertically	1	9000
E11286	Rotisserie accessory for 15 ml x 16 centrifuge tubes vertically	1	9000
E11274	Disk support rods used with disk accessories	4	2500

Wavex rotating mixer give gentle but effective mixing of biological samples to be held in 1.5 ml to 50 ml tubes used in a variety of applications including immune precipitations, prevention of blood coagulation and latex diagnostics.

Wavex rotating mixer has a rotisserie type design.

LCD displays and digital speed control allows procedures to be accurate.

Specifications

Voltage	220-240 V
Frequency	50-60 Hz
Power	40 W
Motor Type	DC Motor
Tilt Angle	0 - 90°
Speed Range	0-70 rpm
Speed & Timer Display	LCD
Time Setting Range	1 - 1199 min
Operation Type	Continuous / timed operation
Dimensions	220 x 510 x 260 mm
Weight	8 kg
Permissible ambient Temperature	5-40° C
Permissible ambient Humidity	80%
Protection Class	IP21



E11284



E11285



E11286



E11281



E11282



E11283

Wavemax - Classic Rocking Shaker & LCD Digital Rocking Shaker

Classic Rocking Shaker

Code	Product	No. per Case	Price /Case (₹)
E11401	Wavemax - Classic Rocking Shaker with flat mat	1	30700

LCD Digital Rocking Shaker

Code	Product	No. per Case	Price /Case (₹)
E11410	Wavemax - Digital Rocking Shaker with flat mat	1	89000

Spare Accessories for Rocking Shaker

Code	Product	No. per Case	Price /Case (₹)
E11411	Universal attachment with 4 Bars	1	10500
E11413	Dish attachment with non-slip mat & fixed string	1	9500
E11414	Fixing clip attachment	1	7000
E11415	Fixing clip for for 25 ml flask	1	900
E11416	Fixing clip for for 50 ml flask	1	900
E11417	Fixing clip for for 100 ml flask	1	900
E11418	Fixing clip for for 200/250 ml flask	1	1700
E11419	Fixing clip for for 500 ml flask	1	1700

* Pls note E11414 is required to run E11415, E11416, E11417, E11418 & E11419.

Abdos classic rocking shakers are used for staining and destaining gel, hybridization procedure, haematology and blotting techniques. Designed to provide precise speed and tilt angles required for broad range of molecular and biological mixing applications

It boasts of digital speed control and large LCD display, speed and timer can be viewed simultaneously.

Aluminium-alloyed platform provides strong bearing capability, with non-slip mat that holds vessels and prevents it from slipping.

Special designed and developed compact space-saving design fits easily in the incubator.

Space Accessories have wide range of platforms for use with variety of vessels.



Specifications		
Code	E11401	E11410
Voltage	220-240 V	220-240 V
Frequency	50-60 Hz	50-60 Hz
Power	20 W	50W
Motor type	DC Motor	DC Motor
Rocking motion	See-saw rocking	See-saw rocking
Maximum load capacity (With Platform)	3.0kg	5.0kg
Tilt angle	7°	9°
Speed range	0-80 rpm	10-70 rpm
Speed & timer display	Analog	LCD
Time range	NA	1 min - 19h59min
Operation Type	Continuous operation	Continuous /timed operation
Dimensions	270 x 330 x 130 mm	360 x 430 x 106 mm
Weight	2.7 Kg	9.0 Kg
Permissible ambient temperature	5-40° C	5-40° C
Permissible ambient Humidity	80%	80%
Protection class	IP21	IP21



Universal attachment with bars



Dish attachment with non-slip mat

Wavemax – Classic Dancing (3D) Shaker & LCD Digital (3D) Dancing Shaker

Classic Dancing (3D) Shaker

Code	Product	No. per Case	Price /Case (₹)
E11420	Wavemax - Classic Dancing Shaker with flat mat	1	30700

LCD Digital Dancing (3D) Shaker

Code	Product	No. per Case	Price /Case (₹)
E11430	Wavemax - Digital Dancing Shaker with flat mat	1	89000

Spare Accessories for Rocking Shaker

Code	Product	No. per Case	Price /Case (₹)
E11411	Universal attachment with 4 Bars	1	10500
E11413	Dish attachment with non-slip mat & fixed string	1	9500
E11414	Fixing clip attachment	1	7000
E11415	Fixing clip for for 25 ml flask	1	900
E11416	Fixing clip for for 50 ml flask	1	900
E11417	Fixing clip for for 100 ml flask	1	900
E11418	Fixing clip for for 200/250 ml flask	1	1700
E11419	Fixing clip for for 500 ml flask	1	1700

* Pls note E11414 is required to run E11415, E11416, E11417, E11418 & E11419.

Wavemax classic dancing shakers are used for staining and destaining gel, hybridization procedure, haematology and blotting techniques.

This 3 dimensional shaker is designed to provide precise speed and tilt angles required for broad range of molecular and biological mixing applications.

Abdos LCD dancing shaker boasts of digital speed control and large LCD display, speed and timer can be viewed simultaneously.

Aluminium-alloyed platform provides strong bearing capability, with non-slip mat that holds vessels and prevents it from slipping.

Special designed and developed compact space-saving design fits easily in the incubator.

Space accessories have wide range of platforms for use with variety of vessels.



Specifications		
Code	E11420	E11430
Voltage	220-240 V	220-240 V
Frequency	50-60 Hz	50-60 Hz
Power	20 W	40 W
Motor Type	DC Motor	DC Motor
Rocking Motion	3 Dimensional orbital	3 Dimensional Orbital
Maximum load capacity (With Platform)	3.0kg	10 kg
Tilt Angle	7°	9°
Speed Range	0-80 rpm	10-70 rpm
Speed & Timer Display	Analog	LCD
Time Range	NA	1 min - 19h59 min
Operation Type	Continuous operation	Continuous /timed operation
Dimensions	270 x 330 x 130 mm	360 x 410 x 200 mm
Weight	3.2 Kg	9.0 Kg
Permissible ambient Temperature	5-40° C	5-40° C
Permissible ambient Humidity	80%	80%
Protection Class	IP21	IP21



Universal attachment with bars



Dish attachment with non-slip mat

WAVEMAX – ORBITAL SHAKER JUNIOR

CODE	Product	No. per case	Price/ Case (₹)
E11260	Wavemax- Orbital Shaker Junior with flat mat	1	55000

Spare Accessories

CODE	Product	No. per case	Price/ Case (₹)
E11261	Universal Magnetic platform for flasks and tube racks	1	13000
E11262	Adjustable spring platform for unique vessel types	1	18000

Abdos powerful orbital shaker is capable of mixing liquids upto a load capacity of 6 kg in bottles, flasks, test tubes and dishes.

Abdos orbital shaker Junior has digital speed control of upto 300 rpm.

Universal magnetic clamp can be instantly exchanged.

These shakers have high capacity of upto 2 4 x 125 ml, 14 x 250 ml, 9 x 500 ml, 5 x 1l and 2 x 2l flasks and bottles

These shakers have horizontal circular 19 mm orbit for aeration and mixing.

Specifications

Voltage	220-240 V
Frequency	50 Hz
Shaking Movement	Orbital
Speed Range	50 – 300 rpm, Variable
Speed Increment	10 rpm
Orbit	19 mm
Load Capacity	Maximum 4 kg ; 4 X 1 L
Dimension	330 x 300 x 120 mm
Weight	5.5 kg
Permissible ambient temperature	+4 to +65° C
Permissible relative humidity	80%



WAVEMAX – ORBITAL SHAKER

206

CODE	Product	No. per case	Price/ Case (₹)
E11290	Wavemax - Orbital Shaker with flat mat	1	175000

Spare Accessories

CODE	Product	No. per case	Price/ Case (₹)
E11291	Universal Magnetic platform for flasks and tube racks	1	28000

Kindly note: Flask Clamps and fixed platforms are sold separately. See Page No.188 for complete listing.

Abdos powerful orbital shaker is capable of mixing liquids upto a load capacity of 6 kg in bottles, flasks, test tubes and dishes.

These shakers have high capacity of upto 24 x 125 ml, 14 x 250 ml, 9 x 500 ml, 5 x 1l and 2 x 2l flasks and bottles

Abdos orbital shaker has digital speed control of upto 300 rpm.

These shakers have horizontal circular 19 mm orbit for aeration and mixing.

Universal magnetic clamp can be instantly exchanged.

Specifications

Voltage	220-240V
Frequency	50 Hz
Shaking Movement	Orbital
Speed Range	30 - 300 rpm, Variable
Speed Increment	1 rpm
Orbit	19 mm
Load Capacity	Maximum 6 kg ; 2X2 L
Dimension	280 x 330 x 75 mm
Weight	11.25 kg
Permissible ambient temperature	+4 to +65° C
Permissible relative humidity	80%



WAVEMAX - Classic Orbital & Linear Shaker

Classic Orbital Shaker

Code	Product	No. per Case	Price /Case (₹)
E11440	Wavemax - Classic Orbital	1	33500

Classic Linear Shaker

Code	Product	No. per Case	Price /Case (₹)
E11450	Wavemax - Classic Linear Shaker	1	33500

Abdos orbital and linear shakers are capable of mixing and shaking liquids in bottles, flasks, vessels, test tubes and dishes.

Space Accessories have wide range of platforms for use with variety of vessels.

Special designed and developed compact space-saving design fits easily in the incubator and refrigerator.

Specifications

Code	E11440	E11450
Voltage	220-240 V	220-240 V
Frequency	50-60 Hz	50-60 Hz
Power	30 W	30 W
Motor Type	DC Motor	DC Motor
Shaking Motion	Orbital	Linear
Orbital Diameter	20mm	20mm
Maximum load capacity (With Platform)	3 kg	3 kg
Speed Range	0-200 rpm	0-200 rpm
Operation Type	Continuous operation	Continuous /timed operation
Dimensions	270 x 330 x 110 mm	270 x 330 x 110 mm
Weight	3 Kg	3 Kg
Permissible ambient Temperature	5-40° C	5-40° C
Permissible ambient Humidity	80%	80%
Protection Class	IP21	IP21



WAVEMAX - LCD Digital Orbital & Linear Shaker

LCD Digital Orbital Shaker

Code	Product	No. per Case	Price /Case (₹)
E11460	Wavemax - Orbital Shaker with Universal attachment with 3 Bars	1	72000

LCD Digital Linear Shaker

Code	Product	No. per Case	Price /Case (₹)
E11470	Wavemax - Linear Shaker with Universal attachment with 3 Bars	1	72000

Spare Accessories for E11440, E11450, E11460 & E11470

Code	Product	No. per Case	Price /Case (₹)
E11451	Universal attachment with 3 Bars	1	9500
E11452	Dish attachment with non-slip mat	1	9000
E11453	Fixing clip attachment	1	5000
E11415	Fixing clip for for 25 ml flask	1	900
E11416	Fixing clip for for 50 ml flask	1	900
E11417	Fixing clip for for 100 ml flask	1	900
E11418	Fixing clip for for 200/250 ml flask	1	1700
E11419	Fixing clip for for 500 ml flask	1	1700

* Pls note E11453 is required to run E11415, E11416, E11417, E11418 & E11419.

Abdos orbital and linear shakers are capable of mixing and shaking liquids in bottles, flasks, vessels, test tubes and dishes.

Independent LCD display for adjusting speed and time. Speed and timer can be viewed simultaneously.

Maximum load capacity of 2.5 kg with platform.

Special designed and developed compact space-saving design fits easily in the incubator and refrigerator.

Electronic time switching clock controls time or continuous operation mode.

Space Accessories have wide range of platforms for use with variety of vessels.

Over speed detection and protection.



Specifications		
Code	E11460	E11470
Voltage	220-240 V	220-240 V
Frequency	50-60 Hz	50-60 Hz
Power	30 W	30 W
Motor Type	Brushless DC Motor	Brushless DC Motor
Shaking Motion	Orbital	Linear
Orbital Diameter	4 mm	4 mm
Maximum load capacity (With Platform)	2.5 kg	2.5 kg
Speed Range	100-800 rpm	100-350 rpm
Speed & Timer Display	LCD	LCD
Time Range	1 min - 19h59 min	1 min - 19h59 min
Operation Type	Continuous /timed operation	Continuous /timed operation
Dimensions	300 x 340 x 100 mm	300 x 340 x 100 mm
Weight	8.1 Kg	8.1 Kg
Permissible ambient Temperature	5-40° C	5-40° C
Permissible ambient Humidity	80%	80%
Protection Class	IP21	IP21



Universal attachment with bars

Dish attachment with non-slip mat

Fixing clamp attachment

Wavemax - Heavy Duty Lcd Digital Orbital & Linear Shaker

LCD Digital Orbital Shaker

Code	Product	No. per Case	Price /Case (₹)
E11480	Wavemax - Heavy Duty Orbital Shaker with Universal attachment with 4 Bars	1	76999

LCD Digital Linear Shaker

Code	Product	No. per Case	Price /Case (₹)
E11490	Wavemax - Heavy Duty Linear Shaker with Universal attachment with 4 Bars	1	76999

Spare Accessories for E11480, E11490

Code	Product	No. per Case	Price /Case (₹)
E11411	Universal attachment with 4 Bars	1	10500
E11413	Dish attachment with non-slip mat & fixed string	1	9500
E11414	Fixing clip attachment	1	7000
E11415	Fixing clip for for 25 ml flask	1	900
E11416	Fixing clip for for 50 ml flask	1	900
E11417	Fixing clip for for 100 ml flask	1	900
E11418	Fixing clip for for 200/250 ml flask	1	1700
E11419	Fixing clip for for 500 ml flask	1	1700

Abdos orbital and linear shakers are capable of mixing and shaking liquids in bottles, flasks, vessels, test tubes and dishes.

Independent LCD display for adjusting speed and time, speed and timer can be viewed simultaneously.

Special designed and developed compact space-saving design fits easily in the incubator and refrigerator.

Maximum load capacity of 7.5 kg with platform.

Electronic time switching clock controls time or continuous operation mode.

Space Accessories have wide range of platforms for use with variety of vessels.

Over speed detection and protection.



Specifications		
Code	E11480	E11490
Voltage	220-240 V	220-240 V
Frequency	50-60 Hz	50-60 Hz
Power	30 W	30 W
Motor Type	Brushless DC Motor	Brushless DC Motor
Shaking Motion	Orbital	Linear
Orbital Diameter	10 mm	10 mm
Maximum load capacity (With Platform)	7.5 kg	7.5 kg
Speed Range	100-500 rpm	100-350 rpm
Speed & Timer Display	LCD	LCD
Time Range	1 min - 19h59 min	1 min - 19h59min
Operation Type	Continuous /timed operation	Continuous /timed operation
Dimensions	370 x 420 x 100 mm	370 x 420 x 100 mm
Weight	13.5 Kg	13.5 Kg
Permissible ambient Temperature	5-40° C	5-40° C
Permissible ambient Humidity	80%	80%
Protection Class	IP21	IP21



Fixing Clamps



Universal attachment with bars



Dish attachment with non-slip mat

WAVEMAX- Digital Incubator

210

CODE	Product	No. per case	Price/ Case (₹)
E11355	Heating Digital Incubator	1	55000
E11356	Heating & Cooling Digital Incubator	1	83000

Spare Accessories

CODE	Product	Platform Dimension	No. per case	Price/ Case (₹)
E11357	Extra Shelf ,10.5x8 inch, Plastic(not autoclavable)	10.5"x18"	1	5000

Wavemax-Digital Incubators provide the facility to monitor the chamber temperatures in real time.

Having large internal chambers with two adjustable shelves for increased space. Internal Power Outlet for Installation of other

Equipment for sample agitation within the Digital Incubators.

Wavemax-Digital Incubator is available in a heating unit or heating and cooling for lower temperature applications.

Specifications

Code	E11355	E11356
Voltage	220-240 V	220-240 V
Frequency	50-60 Hz	50-60 Hz
Temp. Range	Ambient +5°C to 60°C	Ambient -15°C to 60°C
Temp. Operation	Only Heating	Heating & Cooling
Temp. Accuracy	0.5°C (at 37°C)	0.5°C (at 37°C)
Temp. Uniformity	31.5°C (at 37°C)	31.5°C (at 37°C)
Temp. Increment	1°C	1°C
Platform Dimensions	235 x 290 mm	235 x 290 mm
Operating Temp. Range	+4 to +65°C	+4 to +65°C
Exterior	335 x 370 x 475 mm	335 x 370 x 475 mm
Interior	26 x 23.5 x 32.5 cm	26 x 23.5 x 32.5 cm
Capacity	20L	20L
Weight	6.5 kg	6.5 kg



WAVEMAX - Incu-Shaker Mini

CODE	Product	Platform Dimension	No. per case	Price/ Case (₹)
E11920	Incu-Shaker Mini with Non-Slip Rubber Mat	9.5 x 11.5 in	1	P.O.R.

Spare Accessories

CODE	Product	Platform Dimension	No. per case	Price/ Case (₹)
E11925	Universal Magnetic Platform for Flasks and Tube racks (For E11920)	9.5 x 11.5 in	1	P.O.R.

Kindly note: Flask Clamps and fixed platforms are sold separately. See Page No. 188 for complete listing.

Wavemax- Incu-Shaker Mini is a compact shaking incubator that can accept a variety of flasks, tubes, trays, etc.

The standard platform features a non-slip surface ideal for staining trays, tissue culture flasks, and Petri dishes.

Abdos Incu-Shaker offer exceptional temperature uniformity and accuracy due to a proprietary heat distribution technology that ensures temperatures are precisely maintained throughout the chamber within 0.25%, even in the corners.

Over temperature and over speed controls ensure safety, long life, and sample integrity.

Featuring the MAGic Clamp platform, this shaker lets you customize the size and types of vessels being used by simply exchanging clamp sizes. Clamps utilize a powerful magnetic base to securely attach to the shaking platform without screws, bolts, or tools

Speed, temperature, and time are controlled with a push of a button and are displayed on the LED panel.

Advanced motor isolation system minimizes noise and vibration.

Specifications

Code	E11920
Volt	220-240 V
Frequency	50-60 Hz
Speed	Variable, 30 to 300 rpm
Speed Adjustment	1 rpm
Shaking Orbit	19 mm
Temperature Range	Ambient +5°C to 70°C
Temperature Increment	0.1°C
Temperature Accuracy	±0.1°C
Temperature Uniformity	±0.25%
Timer	1 min to 48 hours or continuous
Platform Dimensions	23.5 x 29 cm
Overall Dimensions (W x D x H)	28 x 41 x 33 cm
Weight	11.5 Kg



WAVEMAX - Incu-Shaker (Incubating / Refrigerating)

212

CODE	Product	Platform Dimension (in)	No. per case	Price/ Case (₹)
E11921	Incu-Shake-53	13.8 x 13.8	1	P.O.R.
E11922	Incu-Shake-53R	13.8 x 13.8	1	P.O.R.
E11923	Incu-Shake-83	17.7 x 17.7	1	P.O.R.
E11924	Incu-Shake-83R	17.7 x 17.7	1	P.O.R.

Spare Accessories

CODE	Product	No. per case	Price/ Case (₹)
E11955	Sticky Plate for Incu-Shake 53 & Incu-Shake53R	1	P.O.R.
E11956	Sticky Plate for Incu-Shake 83 & Incu-Shake83R	1	P.O.R.
E11957	Clamp Platform for Incu-Shake 53 & Incu-Shake53R	1	P.O.R.
E11958	Clamp Platform for Incu-Shake 83 & Incu-Shake83R	1	P.O.R.
E11959	Clamp For 50 ml flask	1	P.O.R.
E11960	Clamp For 100 ml flask	1	P.O.R.
E11961	Clamp For 250 ml flask	1	P.O.R.
E11962	Clamp For 300 ml flask	1	P.O.R.
E11963	Clamp For 500 ml flask	1	P.O.R.
E11964	Clamp For 1 L flask	1	P.O.R.
E11965	Clamp For 2 L flask	1	P.O.R.
E11966	Clamp For 2.8 L flask	1	P.O.R.
E11967	Clamp For 4 L flask	1	P.O.R.
E11968	Clamp For 6 L flask	1	P.O.R.
E11969	Test Tube Holder for 16 mm diameter hole	1	P.O.R.
E11970	Test Tube Holder for 25 mm diameter hole	1	P.O.R.
E11971	Test Tube Holder for 35 mm diameter hole	1	P.O.R.
E11972	Multi-Purpose Tray for Incu-Shake 53 & Incu-Shake53R	1	P.O.R.
E11973	Multi-Purpose Tray for Incu-Shake 83 & Incu-Shake83R	1	P.O.R.
E11974	Adjustable Bar Tray for Incu-Shake 53 & Incu-Shake53R	1	P.O.R.
E11975	Adjustable Bar Tray for Incu-Shake 83 & Incu-Shake83R	1	P.O.R.
E11976	Rubber Surface Tray for Incu-Shake 53 & Incu-Shake53R	1	P.O.R.
E11977	Rubber Surface Tray for Incu-Shake 83 & Incu-Shake83R	1	P.O.R.

Wavemax-Incubating/Refrigerating Shakers offers a variety of biological and biotech applications. This is a dual-action (orbital and reciprocating) shaker which is equipped with

high velocity fan ensuring the uniform temperature distribution and rapid thermal distribution and rapid thermal recovery. Sample monitoring is easy with transparent acrylic lid and fluorescent lamp.

Operating Features

- Temperature control:
- +5°C above ambient to 60°C. (for E11921 and E11923)
 - +15°C to 60°C. (For E11922 and E11924)
- Microprocessor PID control.
- Simple calibration and auto-tuning functions.
- Digital timer with Delayed ON/OFF function: 1 min to 99 hr 59 min.
- High temperature limit setting and open door alarm.
- Adjustable fan speed with defrosting time and period control.
- Intuitive control panel with bright LED display (0.1°C resolution) and touch-sensitive keypad.

Optional Accessories

- Universal / Dedicated Platforms, Rubber Mats, Universal Attachments
- Flask Clamps, Test Tube Racks, Spring Wire Racks, Microplate Holders

Shaking Features:

- Dual shaking modes: orbital or reciprocating action.
- Speed range: 10 to 300 rpm.
- Programmable shaking motion :
- Timer range: 10 sec to 999 hr 59 min 59 sec.
 - Forward & Backward, Pause: 10 sec to 59 min 59 sec.
- Selectable orbit diameter or stroke length: 20, 30, 40mm.



Specifications				
Model	E11921	E11922	E11923	E11924
Volume (L)	53	53	83	83
Temperature Range	Ambient +5 ~ 60°C	15 ~ 60°C	Ambient +5 ~ 60°C	15 ~ 60°C
Temperature Accuracy	±0.1 (38°C)	±0.1 (38°C)	±0.1 (38°C)	±0.1 (38°C)
Temperature Stability	±1.0 (38°C)	±1.0 (38°C)	±1.0 (38°C)	±1.0 (38°C)
Temperature Heater	Heating Plate, 600W	Heating Plate, 600W	Heating Plate, 600W	Heating Plate, 600W
Temperature Timer	Start / Stop / Duration setting; 10sec ~999hr 59min 59sec	Start / Stop / Duration setting; 10sec ~999hr 59min 59sec	Start / Stop / Duration setting; 10sec ~999hr 59min 59sec	Start / Stop / Duration setting; 10sec ~999hr 59min 59sec
Shaker Controller	PID automatic regulation	PID automatic regulation	PID automatic regulation	PID automatic regulation
Shaker Power Unit	Brushless motor	Brushless motor	Brushless motor	Brushless motor
Shaker Methods	Clockwise, Counter-clockwise, forth-back, interrupted,	Clockwise, Counter-clockwise, forth-back, interrupted,	Clockwise, Counter-clockwise, forth-back, interrupted,	Clockwise, Counter-clockwise, forth-back, interrupted,
Shaker Shaking Throw	20, 30 (standard), 40 mm	20, 30 (standard), 40 mm	20, 30 (standard), 40 mm	20, 30 (standard), 40 mm
Shaker Speed (rpm)	10 to 300	10 to 300	10 to 300	10 to 300
Shaker Stability (rpm)	±1 (at 150rpm)	±1 (at 150rpm)	±1 (at 150rpm)	±1 (at 150rpm)
Max. Load (kg)	10	10	15	15
Platform Dimensions	350 x 350 mm	350 x 350 mm	450 x 450 mm	450 x 450 mm
Inside Dimensions	410 x 410 x 320 mm	410 x 410 x 320 mm	510 x 510 x 320 mm	510 x 510 x 320 mm
Outside Dimensions	440 x 740 x 625 mm	440 x 740 x 625 mm	540 x 850 x 625 mm	540 x 850 x 625 mm
Net Weight (kg)	74	85	91	102



WAVEMAX - Orbi-Shaker CO₂

CODE	Product	Platform Dimension	No. per case	Price/ Case (₹)
E11910	ORBI-SHAKER CO ₂ with flatmat Platform	13 x 12 in	1	P.O.R.
E11911	ORBI-SHAKER CO ₂ XL with flatmat Platform	16 x16.5 in	1	P.O.R.

Spare Accessories

CODE	Product	Platform Dimension	No. per case	Price/ Case (₹)
E11915	Universal Magnetic platform for flasks and tube racks(E11910)	14 x 12 in	1	P.O.R.
E11916	Universal Magnetic platform for flasks and tube racks(For E11911)	16 x 16.5 in	1	P.O.R.
E11917	Universal Magnetic platform for flasks and tube racks(For E11911)	18 x 18 in	1	P.O.R.
E11945	Magnetic Clamp for for 3000 ml flask(For E11911)	-	1	P.O.R.
E11946	Magnetic Clamp for for 2000 ml flask(For E11911)	-	1	P.O.R.
E11947	Shelf 14" x 5.5", for Petri dishes, plates, trays, etc.(For E11911)	-	1	P.O.R.

WAVEMAX- ORBI-SHAKER CO₂ is designed for aeration, mixing and shaking in extreme environments, including CO₂ incubators. It can withstand temperatures from 0° to 65°C and humidity levels up to 100%.

To avoid contamination, unintentional release of gas or deviations from protocol remote control module is provided. The remote controller allows the user to set and adjust the shaker settings without opening the chamber door(s).

These Shakers have a capacity of up to 24X 125 ml, 14X250 ml, 9X500 ml, 5X 1.0 L and 2 X 2.0 L flasks and bottles.

The instrument is supplied with a 13 x 12 in. non-slip platform. In addition, convenient MAGIC Clamp™ platforms (of multiple sizes) are also available for use with Erlenmeyer flasks and test tube racks. The unique magnetic attachment method has been widely recognized as the easiest way to instantly change between flask clamps of different sizes.

Specifications

Code	E11910	E11911
Speed Range	30 to 300 rpm, variable	30 to 300 rpm, variable
Speed Increment	1 rpm	1 rpm
Motion/Orbit	Circular /19 mm	Circular /19 mm
Timer	1 minute to 48 hours, continuous	1 minute to 48 hours, continuous
Maximum Capacity	1X2L or 5 X1L	5X2L or 9X1L
Maximum Load Capacity	6.0 kg	7.5 kg
Operating Temperature	0°C to +65°C	0°C to +65°C
Humidity	Up to 100%	Up to 100%
STD Platform Dimension	330 x 305 mm	400x 425 mm
Weight	11.5 Kg	23 Kg

NEW



Spare Accessories for E11260,E11290,E11910,E11911,E11920

CODE	Product	No. per case	Price/ Case (₹)
E11928	Universal Magnetic Clamp for 125ml, 250ml, 500ml flasks	1	5500
E11929	Magnetic Clamp for 1000 ml flask	1	7000
E11930	Magnetic Clamp for for 500 ml flask	1	4500
E11931	Magnetic Clamp for for 250 ml flask	1	4500
E11932	Magnetic Clamp for for 125 ml flask	1	4000
E11933	Magnetic Clamp for for 50 ml flask	1	3700
E11934	Magnetic Clamp for one Microplate	1	9500
E11935	Magnetic Clamp for Tube Rack 30x15ml &20x50ml tubes	1	18000
E11936	Magnetic Clamp for Tube Rack 72x14mm culture tubes	1	18000
E11937	Magnetic Clamp for Tube Rack 32x15ml, tubes	1	18000
E11938	Magnetic Clamp for Tube Rack 15x50ml, tubes	1	18000

Spare Accessories for E11290,E11920,E11910,E11911

CODE	Product	No. per case	Price/ Case (₹)
E11939	Magnetic Clamp for Tube Rack 4x500ml or 600ml conical bottles	1	21000
E11940	Magnetic Clamp for Tube Rack 12x1.5/2.0 ml tubes horizontal	1	12500
E11941	Magnetic clamp for tube Rack 4x15ml tubes horizontal	1	12500
E11942	Magnetic Clamp for Tube Rack 2x50ml tubes horizontal	1	12500
E11943	Magnetic Clamp for tilted holder for 15ml and 50ml tube rack	1	14000
E11944	Universal spring Platform	1	P.O.R

Spare Accessories for E11290, E11920 & E11911

CODE	Product	No. per case	Price/ Case (₹)
E11948	Platform for 5 x 500 ml	1	P.O.R.
E11949	Platform for 8 x 250 ml	1	P.O.R.
E11950	Platform for 1 x 125 ml	1	P.O.R.
E11951	Platform for 4 microplates	1	P.O.R.

WAVEMAX - Incucell-Co₂ Incubator

CODE	Product	Volume	No. per case	Price/ Case (₹)
E11980	INCUCCELL-40	40 L	1	P.O.R.
E11981	INCUCCELL-180	180 L	1	P.O.R.

Spare Accessories

CODE	Product	No. per case	Price/ Case (₹)
E11985	GAS Regulator	1	P.O.R.
E11986	CO2 Analyzer	1	P.O.R.

WAVEMAX-INCUCCELL CO₂ Incubator is Ideal for the experiments of the cultivation of animal cells, sperm/ovum, and anaerobic cells, different types of microbial cells and special tissues. Exceptional temperature and CO₂ control create the perfect incubation conditions, while features such as the seamless chamber make them easy to clean and ensure a contamination-free environment

Features:

6 Sides Direct Heating System.	No Condensation: Heating by front door heater & frame heater prevent condensation in chamber and on glass door.
Dry Wall and Air Jacket.	Natural Humidification using Water Tray.
DUAL BEAM IR CO ₂ Sensor.	HEPA filtration of gas supply.
Microprocessor PID Control.	Availability of Various options like decontamination & Oxygen control.

Specifications

Code	E11980	E11981
Chamber volume(L)	42	180
Temperature Range (°C)	Ambient+5-60	Ambient+5-60
Temperature Accuracy	±0.1°C (37°C)	±0.1°C - (37°C)
Temperature Resolution	0.1°C	0.1°C
Temperature Control	Digital PID	Digital PID
CO ₂ Range	0% - 20%	0% - 20%
CO ₂ Accuracy	±0.1% (5% 37°C)	±0.1% (5% 37°C)
CO ₂ Resolution	0.1%	0.1%
CO ₂ Sensor	IR CO ₂ Sensor	IR CO ₂ Sensor
CO ₂ Control	Microprocessor	Microprocessor
CO ₂ Inlet pressure range	0.5-0.6bar	0.6-0.7bar
Display	LED Display	LED Display
Jacket type	Dry Wall Type (6 sides heat)	Dry Wall Type (6 sides heat)
Chamber material	Stainless Steel (304)	Stainless Steel (304)
Number of shelves	Standard 2 (Max -4)	Standard 3(Max-8)
Chamber dimension	320 x 350 x 370 mm	473 x 528 x 710 mm
Overall dimension	408 x 482 x 550 mm	560 x 665 x 945 mm
Weight	35 kg	78 kg



AEROVAC - Oil Free Vacuum Pump

215

CODE	Product	No. per case	Price/Case (₹)
E11800	Aerovac-300	1	21200
E11801	Aerovac-400	1	29340
E11802	Aerovac-600	1	41050
E11803	Aerovac-410	1	29340
E11804	Aerovac-610	1	41050
E11805	Aerovac-430	1	40890
E11806	Aerovac-800	1	72000
E11807	Aerovac-810	1	72000

Spare Accessories

CODE	Product	Description	No. per case	Price/Case (₹)
E11810	Connectors	--	1	6000
E11815	L-shape connector	--	1	10500
E11816	Quick connection outlet	--	1	7000
E11821	Silencer	Suitable for Aerovac300 / Aerovac400 / Aerovac410	1	6000
E11822	Silencer	Suitable for Aerovac600 / Aerovac610	1	6000
E11823	Vacuum regulator / filter	Incl. pressure gauge	1	23800
E11824	Vacuum regulator / filter	without pressure gauge	1	19500
E11825	Foot pedal	Suitable for Aerovac series vacuum pumps	1	13900
E11826	FEP tubing	--	1	3500
E11830	Silicon tubing	--	1	2500

ABDOS Aerovac - Oil Free Vacuum Pump is a compact, lightweight and mobile oil-free piston pump. It features manual pressure control and a gauge for pressure monitoring.

The unit is maintenance-free and its oil-free design reduces its environmental impact.

The pump can achieve flow rates of up to 52 L/min and an ultimate vacuum down to 13 mbar.

A wide range of optional accessories are available.

Application Areas:
Aerovac Vacuum Pump is useful for biology laboratories, food industry, microbiological detection, vacuum extraction, liquid filtration, vacuum drying, suspended solids measurement.



Specifications

Code	E11800	E11801	E11802	E11803	E11804	E11805	E11806	E11807
Volt(V)	220	220	220	220	220	220	220	220
Frequency(Hz)	50	50	50	50	50	50	50	50
Maximum Power(W)	60	80	80	125	190	210	220	220
Maximum Current (A)	0.3	0.4	0.4	0.6	1.0	1.0	1.0	1.0
Maximum Vacuum(mbar)	100	100	30	150/5.5bar	100	30	100	30
Maximum Flow Rate(L/min)	17	34	19	28	60	40	80	50
Motor Rotation(rpm)	1450	1450	1450	1450	1450	1450	1450	1450
Dimension WxDxH(mm)	272x142x165	310x152x165	310x152x165	247x235x200	340x155x195	340x155x195	340x185x195	340x185x195
Weight (kg)	4.4	5.4	5.4	5.5	8.6	8.6	8.6	8.6
Noise Level(dB)	50	60	50	50	52	52	52	52